

Palace of Westminster

The place where the **Palace of Westminster** building of the activities in the site of the historic building rebuilt between the old stone World War, The Palace Westminster The Victoria 321 feet tall size statues Jesus and Mary The Central chimney for fulfill its purpose The Clock Tower Ben is one of accurate time Besides, the attend debates open from Monday are required Besides the public and The Palace Tower in the entrance gate The Palace decorum of



t – the
ric
al

r-old
was
ed parts
nd

mately
o life-
s of

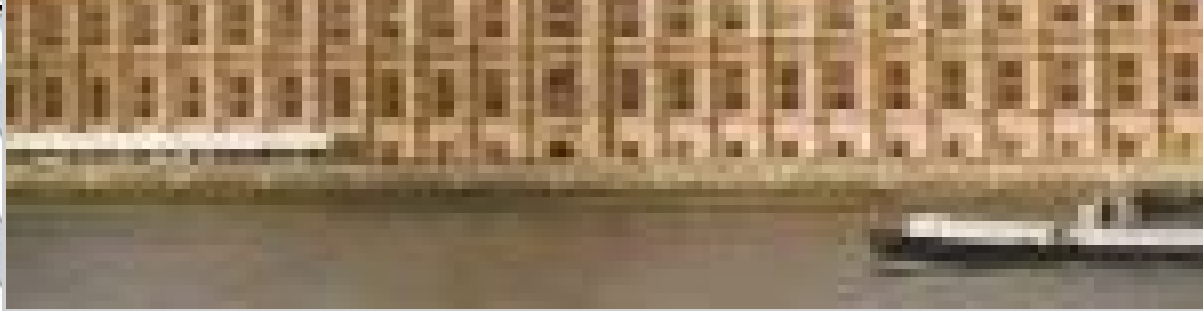
ral
led to

e Big

to
h are
passes

ne
ia
d is the
e

Palace



Westminster Palace



Facts about Palace of Westminster

A UNESCO World Heritage Site, the Palace of Westminster is one of the most visited tourist destinations in London.

There are about eleven hundred rooms in the palace and hundreds of staircases. Norman Porch, Prince Chamber, Queen's Robing Room, Lord's Chamber, Royal Gallery, Library, state apartment for the members of parliament and many more sections are part of the Palace.

It is also one of the high security zones of London.

Sand color limestone has been used for the stonework of the Palace.

Where is the Palace of Westminster ?

The Palace of Westminster has been built next to the River Thames, in the City of Westminster in central London, UK. Its central location in the city makes the Palace or House of Parliament a prominent landmark. London Heliport at Battersea and Heathrow International Airport are the nearest airports. Once in London, you can take a bus, taxi, private car, or even the tube to reach the Westminster Palace. If you intend to take the mainline train, the nearest station is London Waterloo; the Palace is located at 15-minutes walk from the station. One can also reach the Westminster Millennium Pier by boat; the Palace is at a walking distance from the pier.

Best time to visit the Palace of Westminster

You can visit the Palace of Westminster all year round. Just make sure to book your tour in advance to avoid any hassles. The best time to visit the House of Parliament is during the summer recess when the Parliament is not in session. At this time you may take a complete tour of the building. Passes are required to enter when the parliament is in session.

Palace of Westminster Hours

The visiting hours for most of the Saturdays are from 9:15 am to 4:30 pm. For Tuesday to Friday, currently the tours are being conducted from 9: 15 am to 4:30 pm. The timings are subjected to change as per the decision of the officials at the Palace. It is recommended to check for the current applicable timings whenever you are planning the tour.

Palace of Westminster Tickets

The Palace of Westminster offers several guided tours to the UK natives and overseas visitors. You need to book tickets online at their official website.

More about the Palace of Westminster

Nearby Attractions: Jewel Tower, St. Margaret's Church, Central Hall Westminster, House of Lords, Big Ben, Churchill War Rooms and White Hall.

England major attractions: Stonehenge, British Museum, Big Ben London, Buckingham Palace, The London Eye, Millennium Bridge, Tower of London, Westminster Abbey, London Zoo, Trafalgar Square, Palace of Westminster, Kensington Palace, Lost Gardens of Heligan, Nelson's Column, Wellington Arch.

SB20150723

Image by : Diliff

mapsofworld.com provides Interesting Information about Tourist Destinations from across the world. Visit : <http://www.mapsofworld.com>